



UNIVERSITAS
PRASETIYA MULYA

Study Abroad Program Universitas Prasetiya Mulya

INNOVATING ENTREPRENEURSHIP ANEW

prasetiyamulya.ac.id

Established in 1980 by prominent
Indonesian business leaders



1984

Inauguration of Cilandak Campus



2011

Inauguration of BSD Campus



2016

Inauguration of Universitas Prasetiya Mulya



BOARD OF TRUSTEE

Chairman

Eka Tjipta Widjaja*

Member

• Anthoni Salim • Ciputra, Dr.Ir. • Edwin Soeryadjaya • Franky Oesman
Widjaja • Harry Tjan Silalahi,SH • Ipung Kurnia, MBA • Jauw Tjong Kie
• Jusuf Wanandi,SH • Kaharudin Ongko • Mochtar Riady, Dr. • Muljadi
Budiman • Osbert Lyman • Prajogo Pangestu • Sofjan Wanandi • The
Ning King • Usman Atmadjaja

BOARD OF SUPERVISORS

Chairman

T.P.Rachmat, Ir

Member

Antonius J.Supit • G.Sulistiyanto
S., Ir

BOARD OF EXECUTIVES

Chairman

Prasasto Sudyatmiko, SH

Treasurer: Angelina Sutedja, MBA

Member:

Baritono Pangestu • Budiarsa Sastrawinata • Danandjaja Wanandi •
Fransiscus Welirang • Leopard Lyman • Michael J.P.Widjaja •
Mintardjo Halim • Tedy Djuhar

* *Honorable Lifetime Leader*



UNIVERSITAS
PRASETIYA MULYA

SCHOOL OF APPLIED STEM (SCIENCE, TECHNOLOGY, ENGINEERING & MATHEMATICS)

Undergraduate Program

Computer Systems Engineering · Enterprise Software Engineering · Entrepreneurial Energy Engineering · Business Mathematics · Food Business Technology · Product Design Engineering*

SCHOOL OF BUSINESS & ECONOMICS

Undergraduate Program

Accounting · Business · Event · Branding · Finance & Banking · Hospitality Business* · Business Economics (*in english*) · International Business Law*

Postgraduate Program:

Full Time Program : MM Regular

Part Time Program : MM Business Management | MM Strategic Innovation

Executive Learning Institute

New Program *2018



Branding



Business



Business Economics



Event



Finance & Banking



Hospitality Business



Accounting



UNIVERSITAS PRASETIYA MULYA



International Business Law*

UNDERGRADUATE PROGRAM



Business Mathematics



Food Business Technology



Computer Systems Engineering



Entrepreneurial Energy Engineering



Enterprise Software Engineering



Product Design Engineering*

*2018



FACULTY MEMBER

Universitas Prasetiya Mulya

- ✓ **>90 full time** Faculty Members
- ✓ **40% PhD / Doctorate Degree** Holders in business and management mostly from overseas (UK, the Netherlands, Germany, Belgium, USA, Australia, New Zealand, Taiwan, Japan)
- ✓ **6 Professors in Business** (Strategic Management, Business Economics, Finance, Marketing, Human Resource & Organization)
- ✓ **Business/Professional Experience** 8-10 years in many different industries
- ✓ **CEO lecture** each new semester
- ✓ **Adjunct/** part time Faculty Members: business leaders, expert, consultant, entrepreneurs, alumni





INTERNATIONAL AFFILIATION & RECOGNITION



Member of Association of Advanced Collegiate Schools of Business (AACSB) International, 2004 – present



Member of Association of Asia Pacific Business School (AAPBS), 2005 – present



International Trade Centre
UNCTAD / WTO

Join Program in International Professional Certification Program in International Purchasing and Supply Chain Management, Swiss-Based International Trade Centre (UNCTAD/WTO), 2004 – present



Australian National Business School

Australian National Business School (ANBS) Consortium Activity Agreement , 2000 – present



Member of Australian-Based APICS Educational Society For Resource Management, 2004 – present



Global Entrepreneurship Monitor

Member of US-Based Global Entrepreneurship Monitor (GEM), 2006 – present



First Winner, Champion of the Global Social Venture Competition 2009, UC Berkeley-USA, competing with more than 150 MBA teams worldwide

International Cooperation

Bachelor Degree:

Study Abroad

- University of New South Wales – Australia, since 2014
- Tsinghua University – China, since 2015
- National Taiwan University – Taiwan, since 2016
- Boston University – USA , since 2016
- University of South Alabama, since 2018
- Solbridge International Business School, since 2018
- Monash University, since 2019
- Shanghai University, since 2019
- University of Sheffield, (in the process of signing the agreement)

International Cooperation

Master Degree:

Immersion Program

- Mason School of Business, College William & Marry – USA, since 2012
- Korea (KAIST), Indonesia (Prasetiya Mulya), Taiwan (NTU) – KIT Project, 2017
- Pecking University



STUDY ABROAD PROGRAM





Study Abroad – Undergraduate Program



University of New
South Wales, Sydney -
Australia



School of Business &
Management,
Tsinghua University, Beijing - China



College of Management,
National Taiwan University, Taiwan



Study Abroad Calendar

No	University	Period (Smst)	Application Deadline	Orientation	Classes Begin	Classes End
1	Tsinghua Uni	5 th	Early of March	9 th of September	12 th of September	31 st of December
2	Boston Uni	5 th	Mid of March	4 th Week of August	1 st Week of September	3 rd Week of December
3	University of South Alabama	5 th	Mid of Feb	12 th of August	20 th of August	6 th of December
4	UNSW	6 th	Early of October	Mid of February	End of February	End of May
5	National Taiwan Uni	6 th	Early of October	Mid of February	End of February	End of June
6	Solbridge	6 th	Mid of November	25 th of February	4 th of March	15 th of June
7	Sheffield Uni	6 th	Early of October	3 rd of February	10 th of February	13 th of June

Notes: This schedule can be changed



Study Abroad Requirements

No	University	GPA	IELTS/TOEFL IBT	Maximum Number of Students
1	Tsinghua Uni	3.25	6.5 / 95	3 (Three) Students
2	Boston Uni	3.00	6.5 / 84	None
3	National Taiwan Uni	3.00	6.0	10 (Ten) Students
4	UNSW	3.00	6.5 / 90	None
5	University of South Alabama	3.00	6.00	None
6	University of Sheffield	3.00	6.00	None
7	Solbridge	3.00	6.00 / 70	None



Study Abroad Tuition Fee

No	University	Maximum Credits	Tuition Fee
1	Tsinghua Uni	20	13000 RMB
2	Boston Uni	20	US\$ 9000/ semester
3	National Taiwan Uni	25	US\$ 1705/ semester
4	UNSW	24	A\$ 9,225/ term
5	University of South Alabama	Min 12	US\$ 7,896/ semester
6	University of Sheffield	Min 40, Max 60	£ 7750 / semester
7	Solbridge	Min 9, Max 18	US\$ 3500 / semester

Notes: any additional fee information will be in appendix



Website & Contact Person

No	University	Website	Contact Person	Email
1	Tsinghua Uni	www.sem.tsinghua.edu.cn	Oona Zheng (International Office)	zhenglj@sem.tsinghua.edu.cn
2	Boston Uni	www.bu.edu/METinternational	Crystal Day (Senior Program Administrator)	cday88@bu.edu
3	National Taiwan Uni	www.oia.ntu.edu.tw	Franzi Wang (Manager, International Student Division)	franziwang@ntu.edu.tw
4	UNSW	international.unsw.edu.au/study-abroad-at-unsw	Nur Fatmah Syarbini (Deputy Director - Indonesian Affairs)	n.syarbini@unsw.edu.au
5	University of South Alabama	https://www.southalabama.edu	Ferdinal Winarta (Affinity International)	ferdinalwinarta@gmail.com
6	University of Sheffield	https://www.sheffield.ac.uk/studyabroad/overseas/prospective/entry	Jessie Teo (South East Asia Office)	j.teo@sheffield.ac.uk
7	Solbridge	http://solbridge.ac.kr/story/page/index.jsp?code=solbridge0301	Rezia Usman (Senior Regional Manager)	rezia.usman@solbridge.ac.kr



STUDY ABROAD APPLICATION FORM

Name :

NIM :

Dates of Born :

Address :

.....

Active Email :

Phone Number :

GPA :

IELTS Score :

Target University :

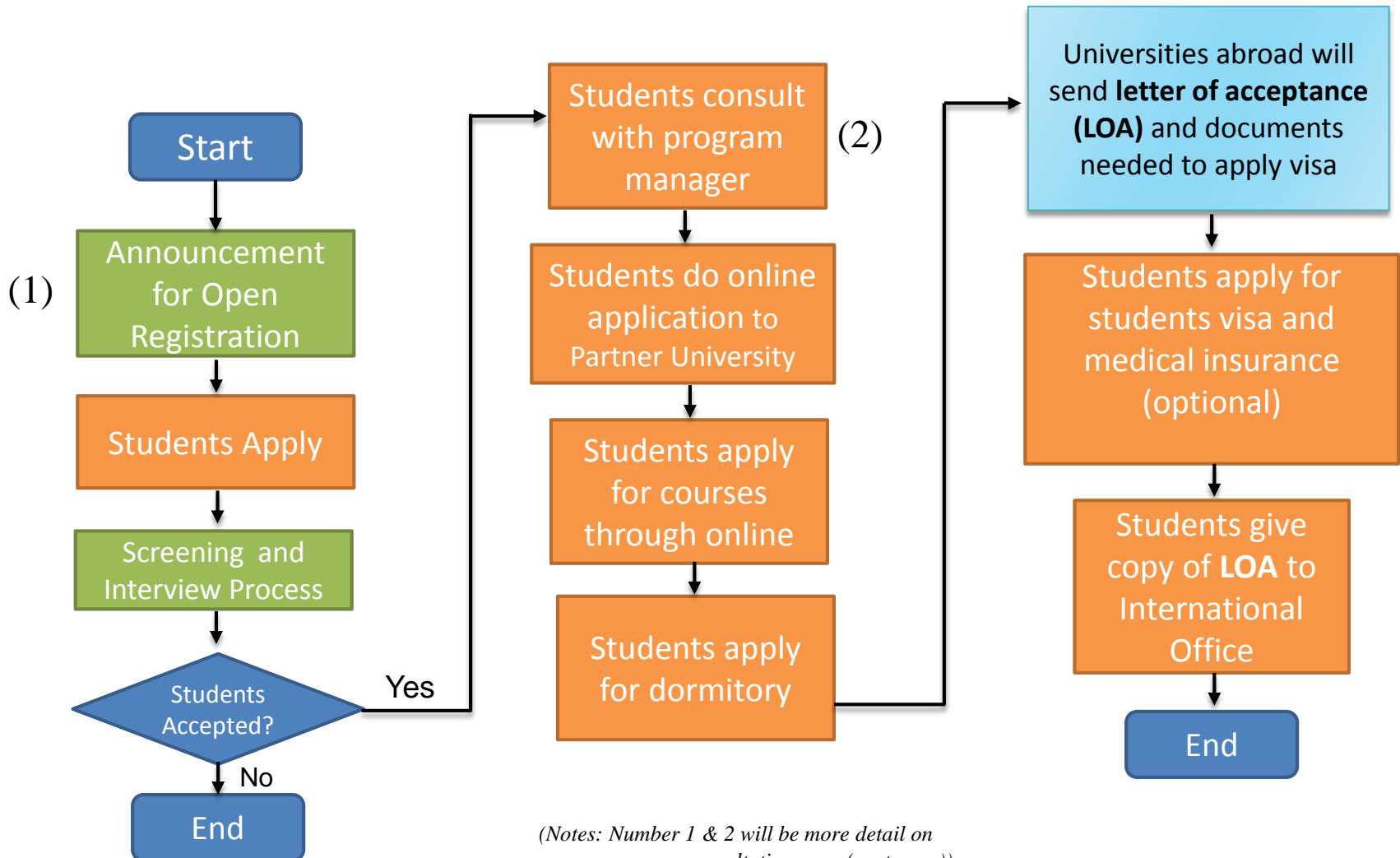
Applicant,

(.....)

*sign above



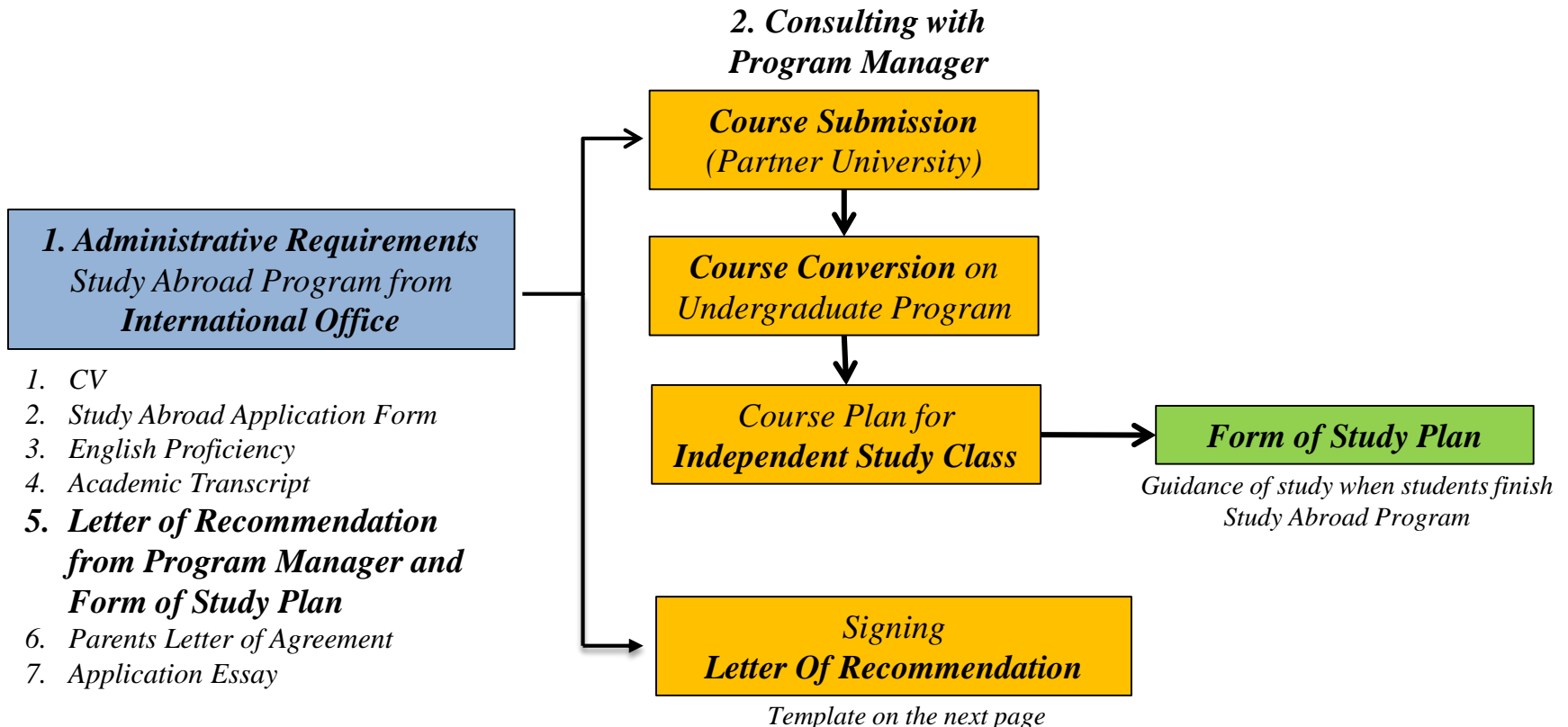
Flowchart of Study Abroad Program



(Notes: Number 1 & 2 will be more detail on program manager consultation page (next page))



COORDINATION FLOW WITH PROGRAM MANAGER





Template Letter of Recommendation



TO WHOM IT MAY CONCERN

In my capacity as the Manager of (school department) undergraduate program in Universitas Prasetiya Mulya, I state that the following student:

Name :
Place, Date of Birth :
NIM :
Major/Batch :
Address :
Phone :

is one of the chosen applicant that certified to join Study Abroad in (Name of Partner University) in academic year of 2019 during September until December for one semester. All credits and scores obtained by the student above are allowed to be transferred to his/her 5th, 6th and 7th semester in Universitas Prasetiya Mulya, thus he/she will only take other subjects that are not taken yet during the program period. Therefore, this letter can also be used for visa arrangement for his study at (Country of Partner University).

South Tangerang, (Dates), 2019
UNIVERSITAS PRASETIYA MULYA

(Name of Program Manager)

(Program Manager, Undergraduate (Name of Department) Program)



Template Form of Study Plan



FORMULIR RENCANA STUDI PROGRAM STUDY ABROAD

PROFIL MAHASISWA

Nama Lengkap	:	
NIM	:	
Angkatan S1	:	
Jurusan	:	
IPK	:	
Semester yang akan ditempuh saat Program Study Abroad	:	
Universitas Tujuan	:	

TRANSFER KREDIT

Berikut ini merupakan daftar nama mata kuliah yang akan saya ambil di universitas tujuan dalam Program Study Abroad.

No	Mata Kuliah yang Diambil di Universitas Tujuan		Konversi atas Mata Kuliah di Universitas Prasetiya Mulya			
	Nama MK	Jumlah SKS	Nama MK	Jumlah SKS	Semester	Jenis MK [Wajib/Elektif]
1						
2						
3						
4						
5						



INDEPENDENT STUDY

Berikut ini merupakan daftar mata kuliah yang akan saya ambil dalam model pembelajaran mandiri:

No	Nama MK	Jumlah SKS	FM Pengampu	Rencana Waktu Pengambilan [Reguler/Pendek] di Semester
1				
2				
3				

MATA KULIAH REGULER

Berikut ini merupakan daftar mata kuliah yang akan saya ambil dalam pembelajaran reguler dari mulai semester saat saya mengambil Program Study Abroad hingga akhir semester 8:

No	Nama MK	Jumlah SKS	Semester	FM Pengampu	Waktu Pengambilan di Semester
1					
2					
3					
4					
5					
6					
7					
8					

*MK IELTS Proficiency Preparation 1 (Semester 6) dan MK IELTS Proficiency Preparation 2 (Semester 7) dianggap sudah diambil dengan nilai A.

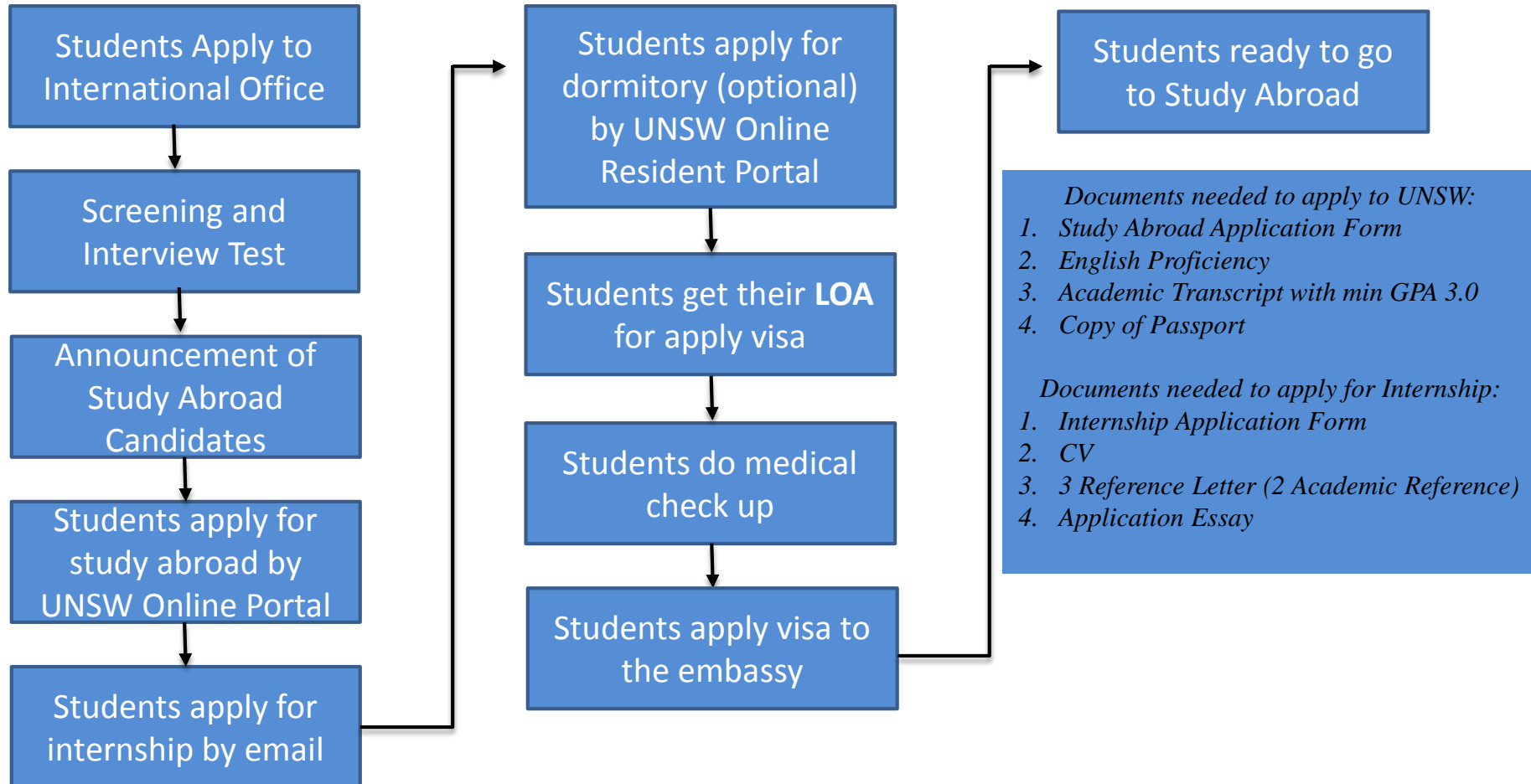
Saya membuat Formulir Rencana Studi ini atas kesadaran pribadi dan tidak ada paksaan.

Tangerang, (Tanggal)

Yang Mengajukan (Nama Mahasiswa) Mahasiswa (Jurusan-Angkatan)	Menyetujui (Nama Manajer Program) Manajer Program S1 (Jurusan)
---	--

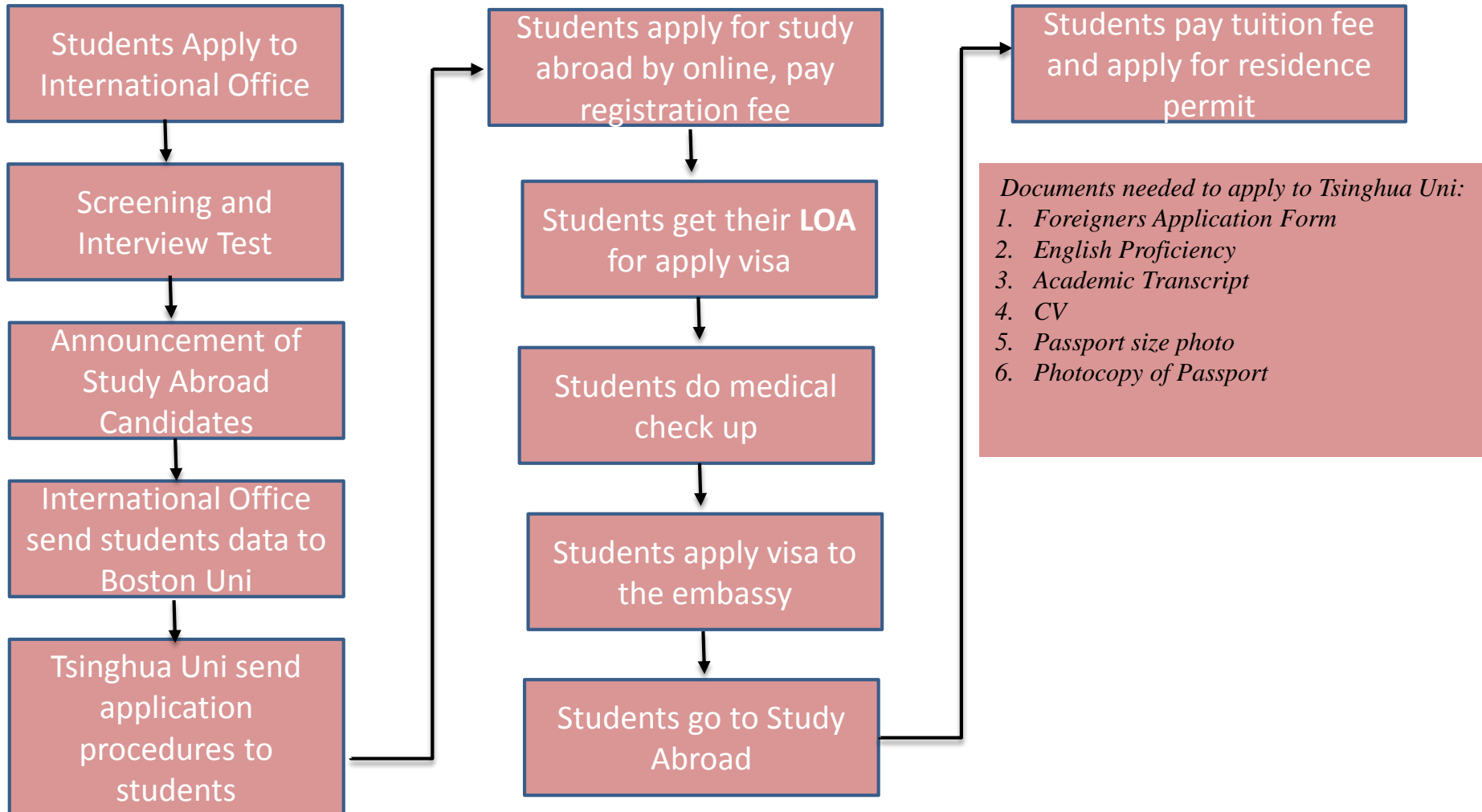


Application Process UNSW



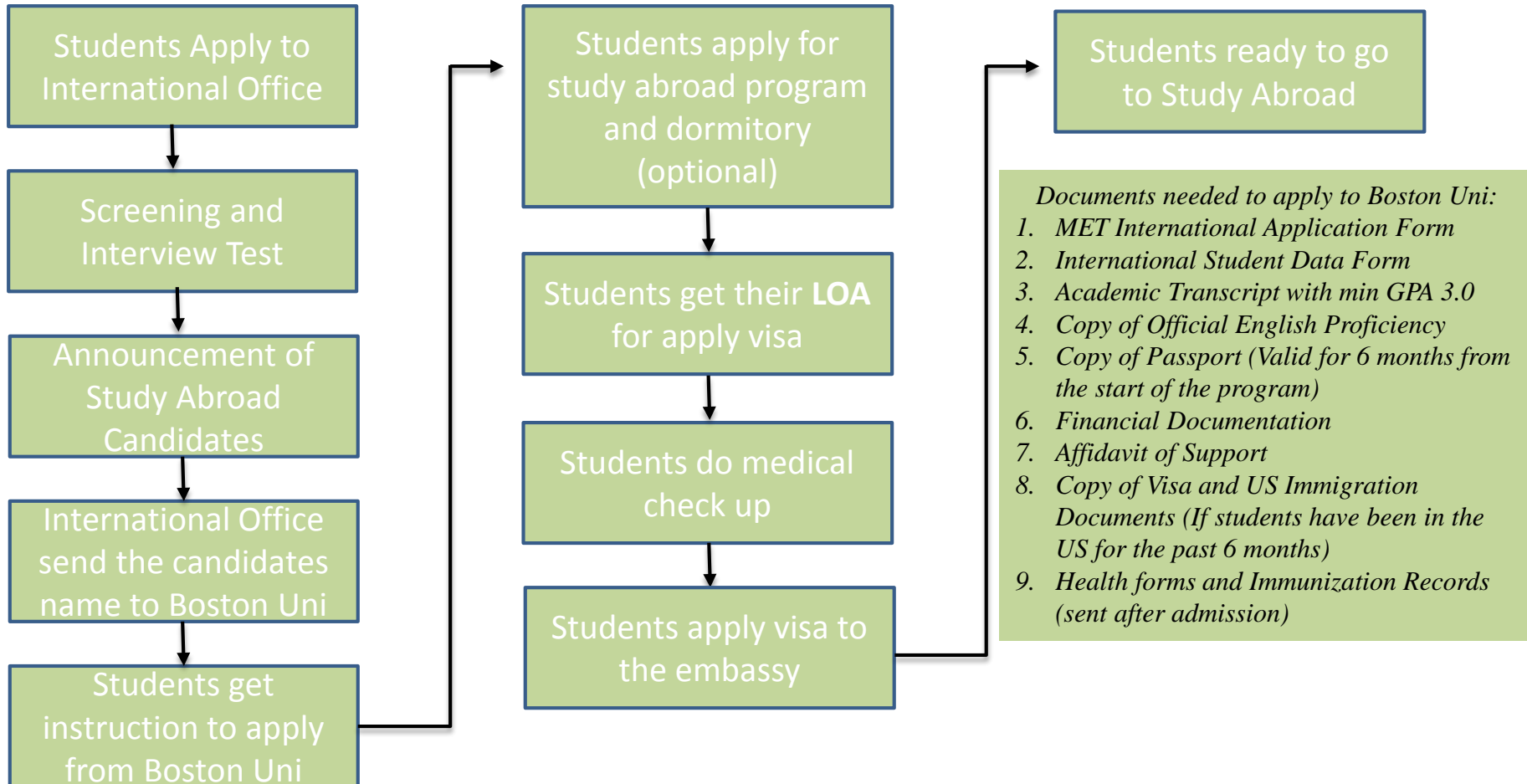


Application Process Tsinghua Uni



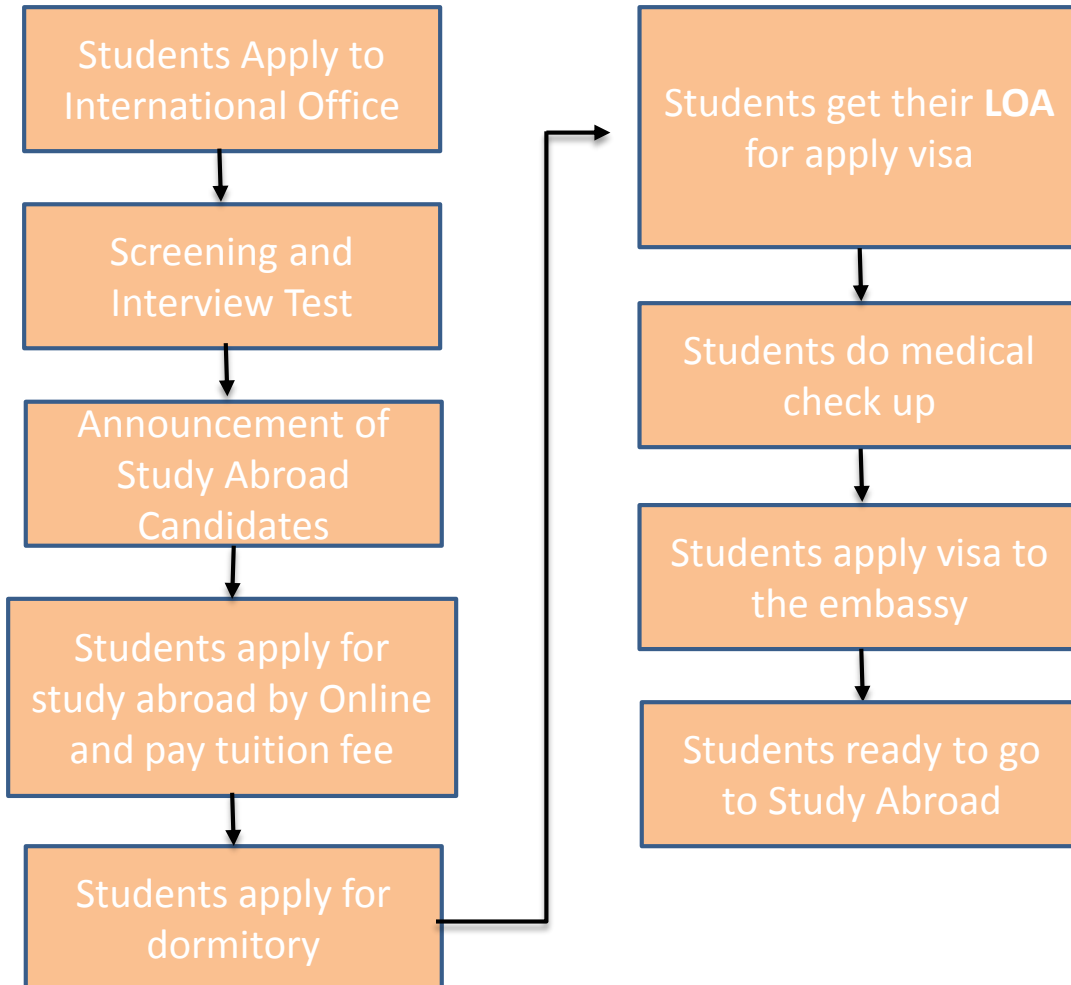


Application Process Boston Uni





Application Process NTU

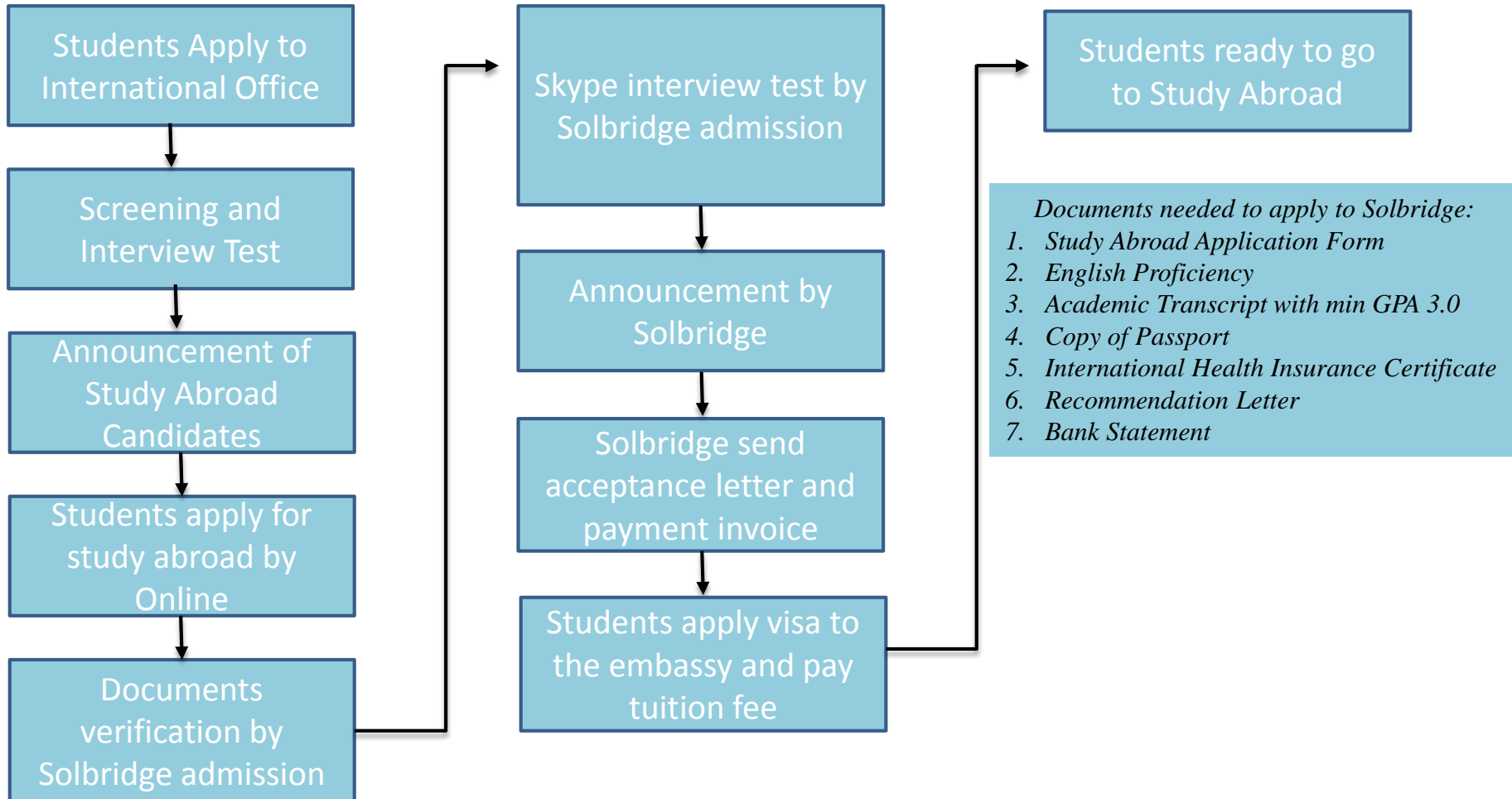


Documents needed to apply to NTU:

- 1. Study Abroad Application Form*
- 2. English Proficiency*
- 3. Academic Transcript with min GPA 3.0*
- 4. Copy of Passport*

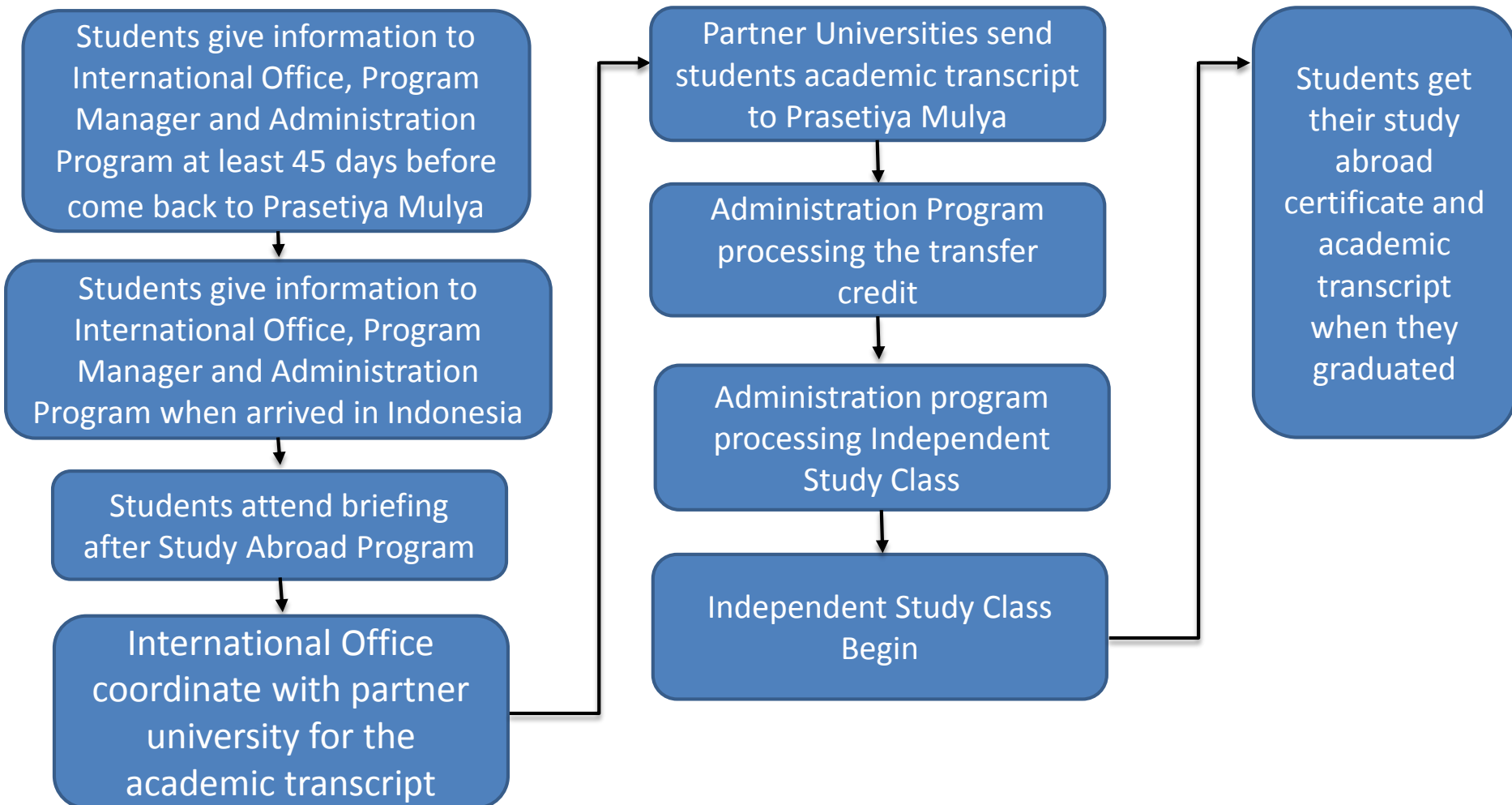


Application Process Solbridge





Guidance for Students before and after coming back to Prasetiya Mulya





Guide to Prasetiya Mulya' courses



Choose courses that:

- is independent, not the prerequisite nor need the prerequisite ones
- have no links to further activities such as exhibition, joint projects etc
- have sufficient FMs to do independent study after study abroad



Example in Choosing & Transferring Courses

No.	Partner's subjects (Tsinghua University)	Prasetiya Mulya's subjects
1	Management System Simulation	Decision Analysis
2	Intro to Electronic Business	Management Information System
3	Labor Economics	Economics of Strategy
4	Game Theory	Business Research Method
5	Environmental & Resource Economics	Analysis of Indonesian Economics
6	Elementary Chinese	Elective Course

Notes:

1. Courses list are available in appendix
2. Courses list may be subject to change depend on each university policy



Example in Choosing & Transferring Courses

No.	Partner's subjects (Boston University)	Prasetiya Mulya's subjects
1	Quantitative and Qualitative Decision Making	Decision Analysis
2	Business in a changing society	Business Process Improvement
3	Managing employees, professionals and teams	Organization Design and Dinamics
4	Business Strategy	Strategic Management
5	International Business Management	International Business
6	Creative Multimedia: Tools, design and application	Elective Course



Example in Choosing & Transferring Courses

No.	Partner's subjects (National Taiwan University)	Prasetiya Mulya's subjects
1	Entrepreneurship and Innovation	Entrepreneurial Capital
2	Managing Strategic Alliances from Global Perspective	Economics of Strategy
3	Strategic Management of Technological Innovation	Management Information System
4	Managing Global Acquisitions and Restructuring	International Business
5	General Chinese	Elective Course
6	Service Learning International	Elective Course



Example in Choosing & Transferring Courses

No.	Partner's subjects (UNSW)	Prasetiya Mulya's subjects
1	Business Intern Program	Entrepreneurial Capital
2	Managing Across Culture	Economy of Strategy
3	Business & Corporate Strategy	International Business
4	Applied Corporate Finance	Advanced Corporate Finance
5	Service & Marketing Management	Service Management
6	Career Planning & Management	Creative Business
7	International Global Marketing	Economy of Strategy
8	Brand Management	Creative Business
9	Creating Social Change	Economic of Strategy
10	Negotiation Skills	International Business
11	Global Business Environment	International Business



UNIVERSITAS
PRASETIYA MULYA



- Thank you -